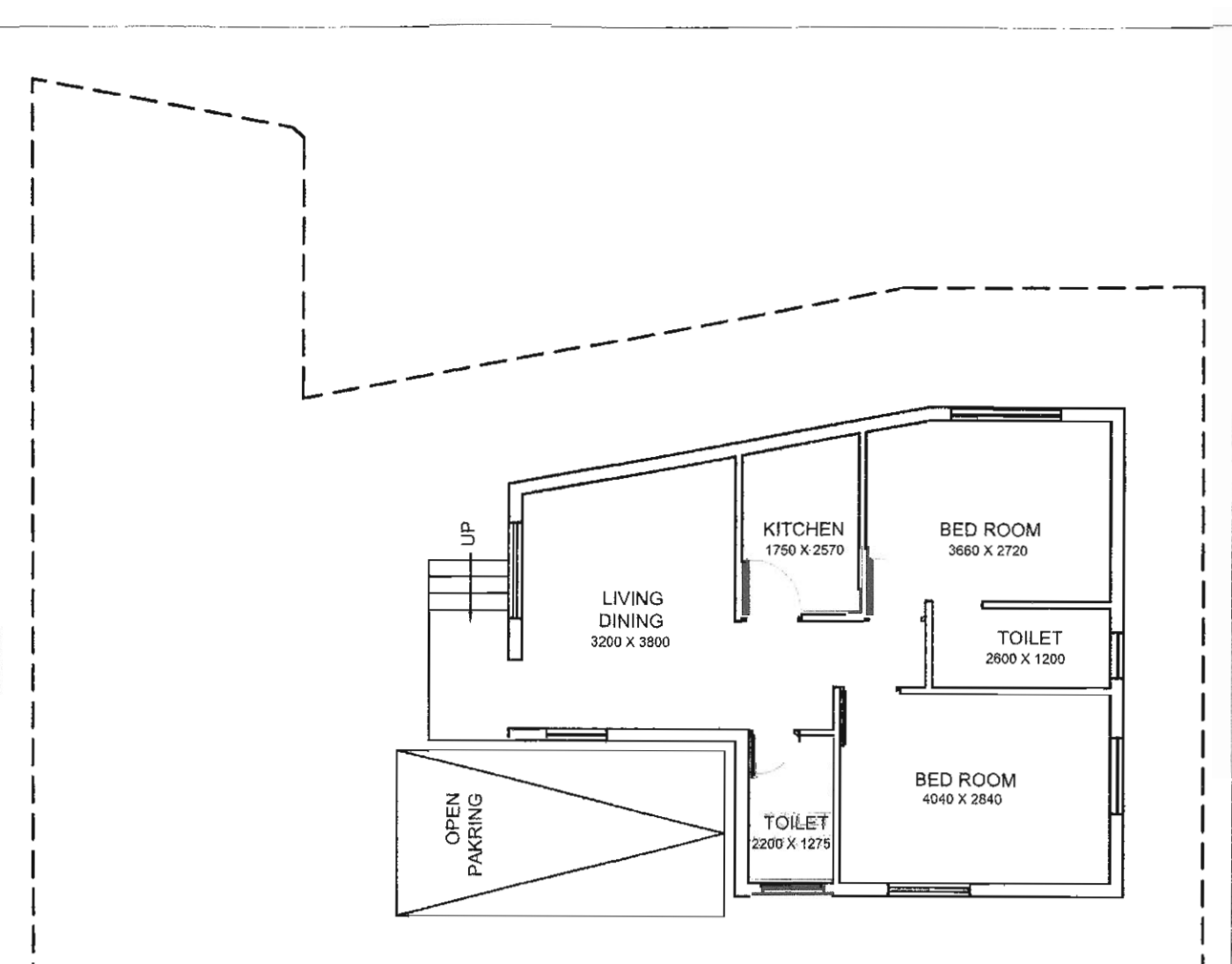
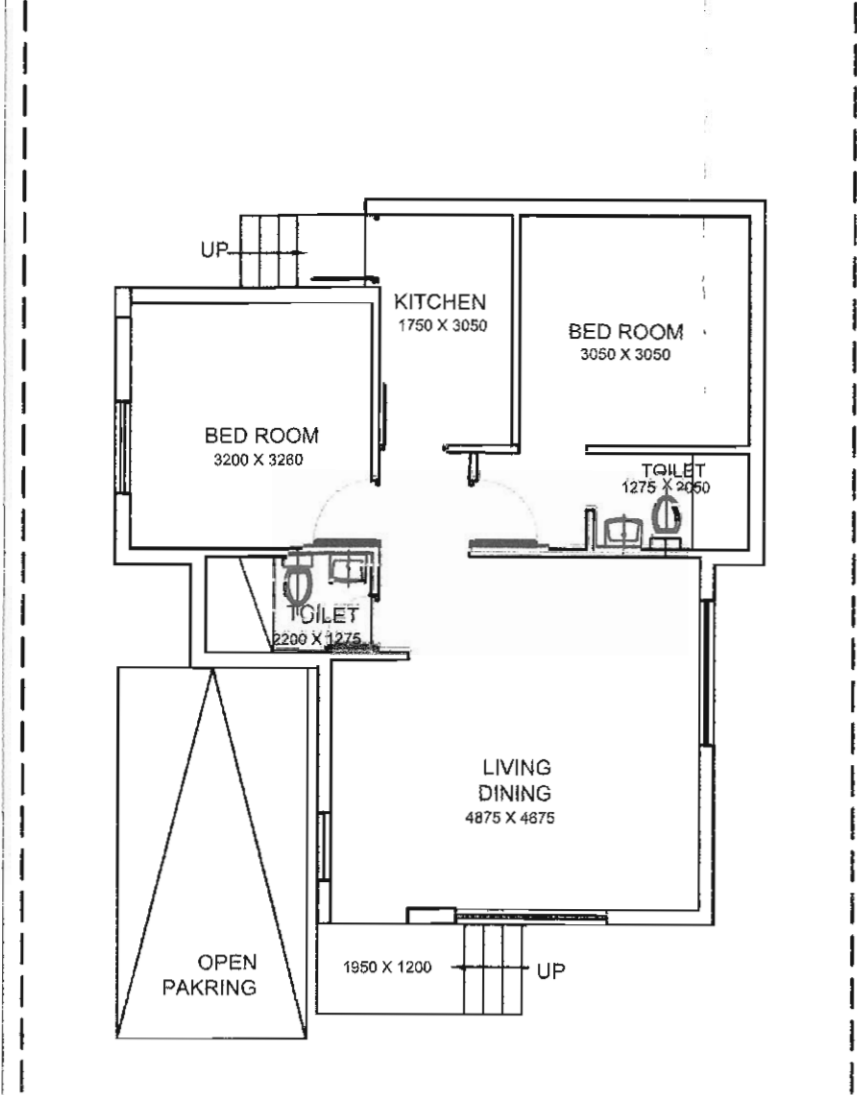


BUNGLOW NO.-78



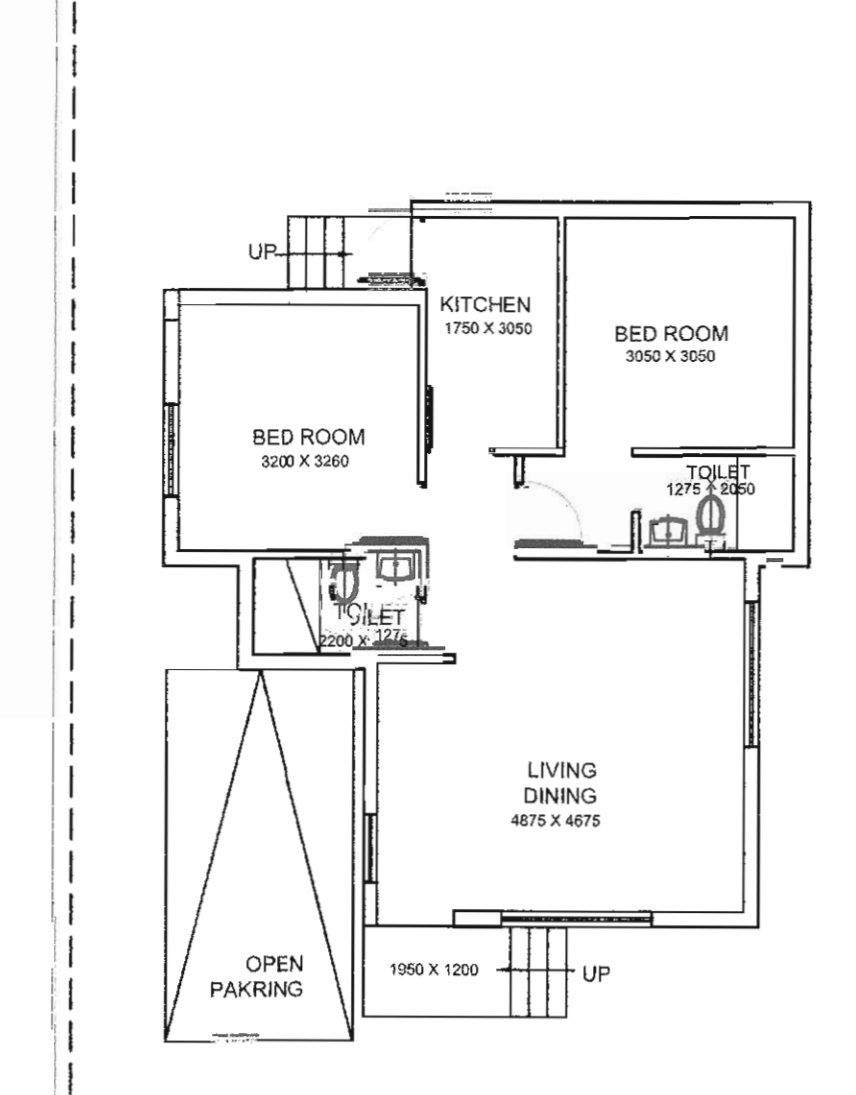
GROUND FLOOR PLAN
BUA = 56.22 SQMT = 605.15 SQFT

BUNGLOW NO.-79



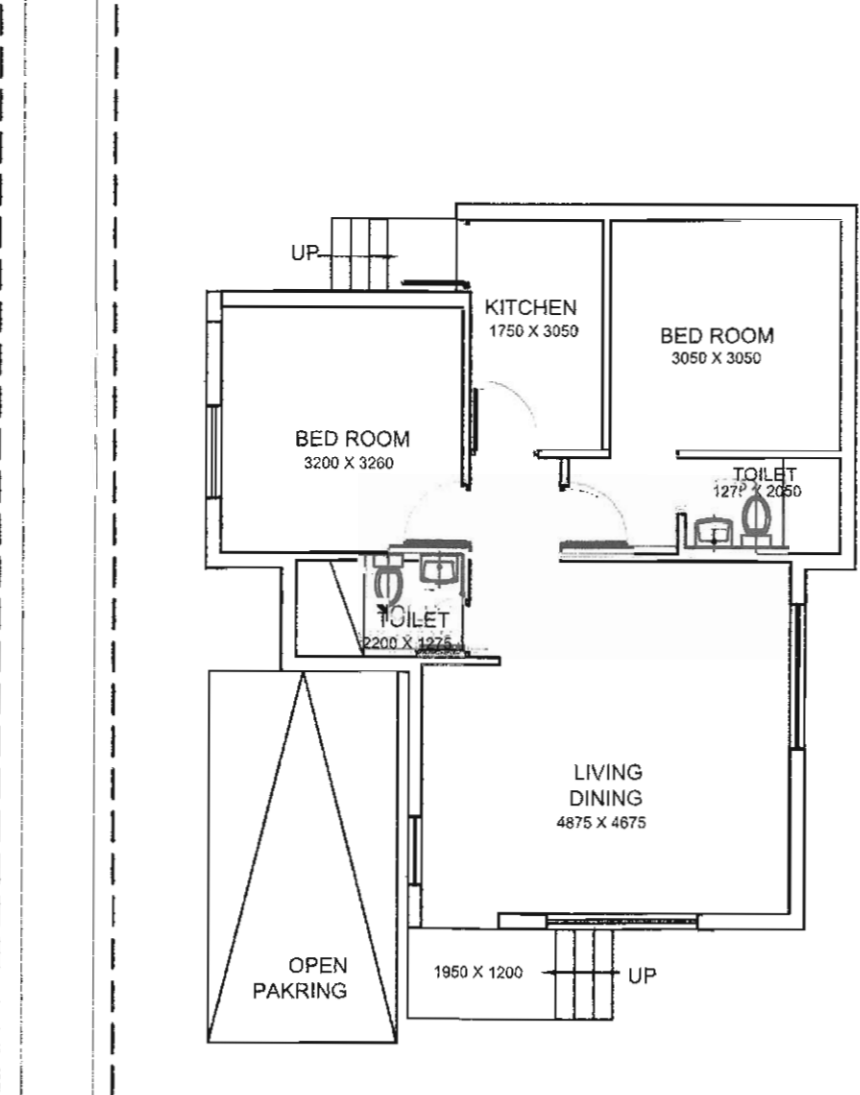
GROUND FLOOR PLAN
BUA = 65.07 SQMT = 700.41 SQFT

BUNGLOW NO.-80



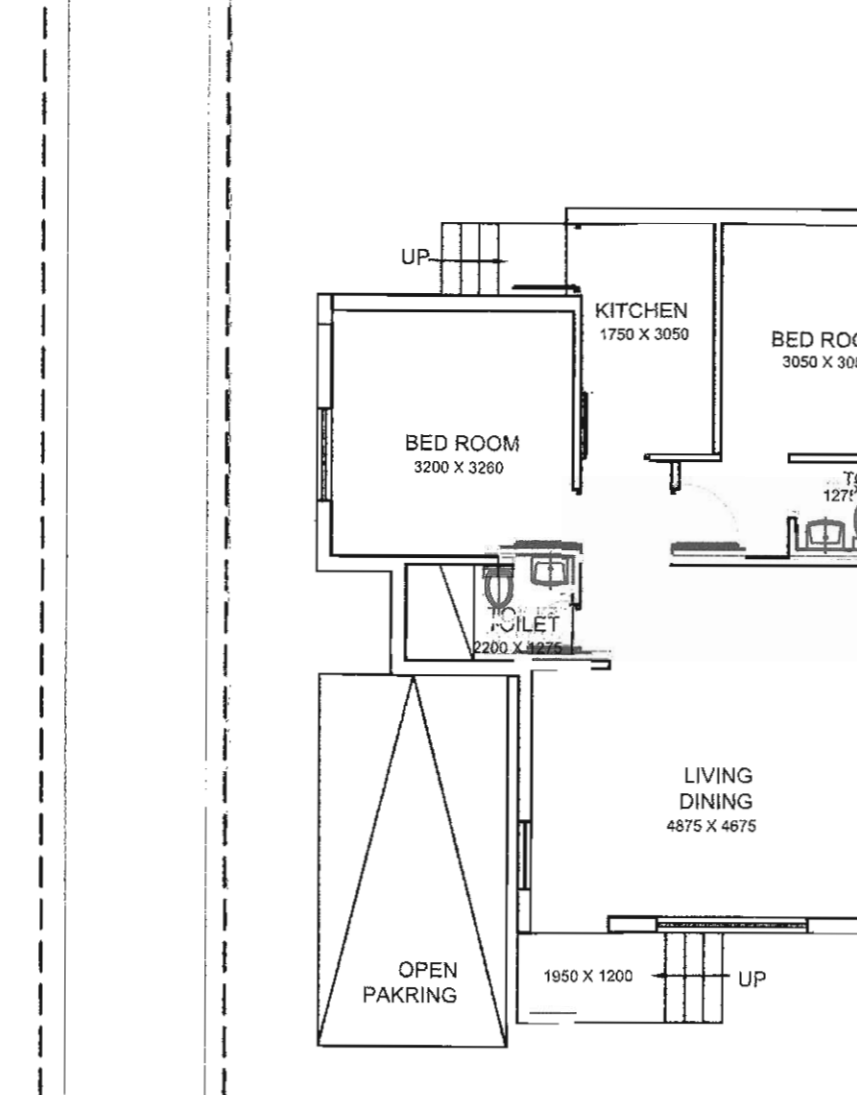
GROUND FLOOR PLAN
BUA = 65.07 SQMT = 700.41 SQFT

BUNGLOW NO.-81



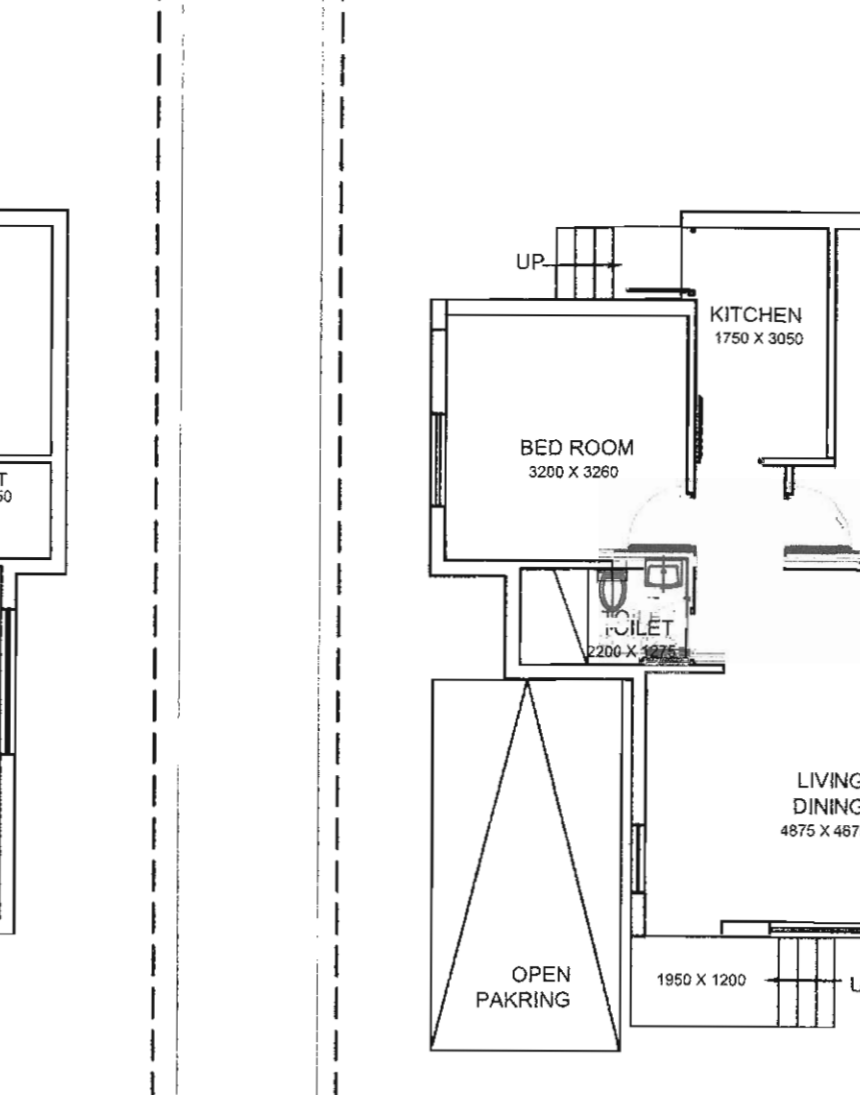
GROUND FLOOR PLAN
BUA = 65.07 SQMT = 700.41 SQFT

BUNGLOW NO.-82



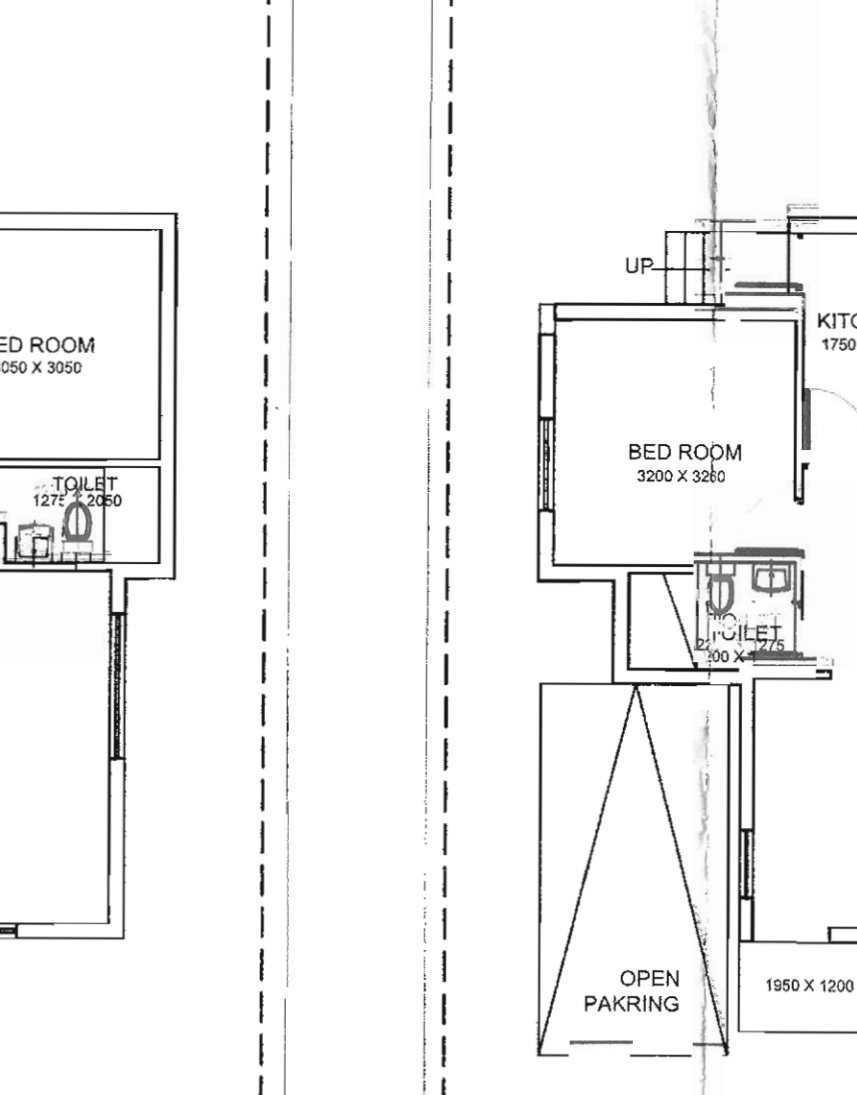
GROUND FLOOR PLAN
BUA = 65.07 SQMT = 700.41 SQFT

BUNGLOW NO.-83



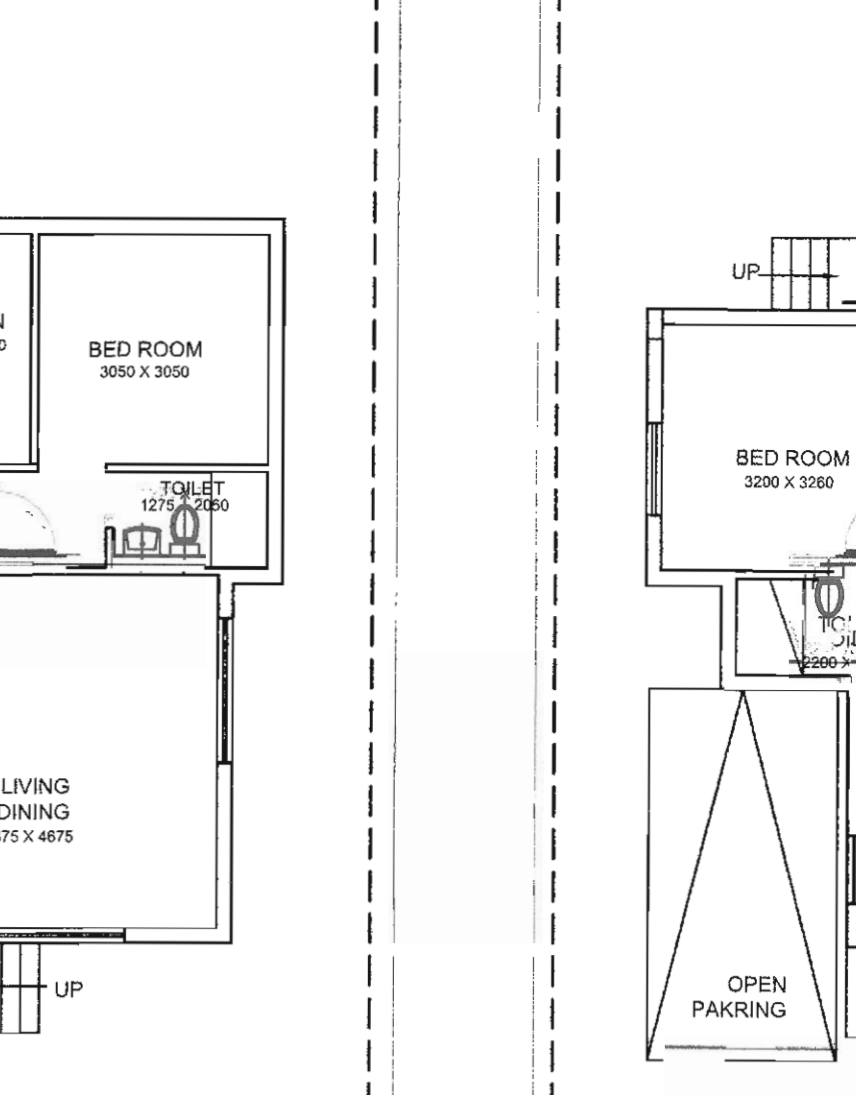
GROUND FLOOR PLAN
BUA = 65.07 SQMT = 700.41 SQFT

BUNGLOW NO.-84



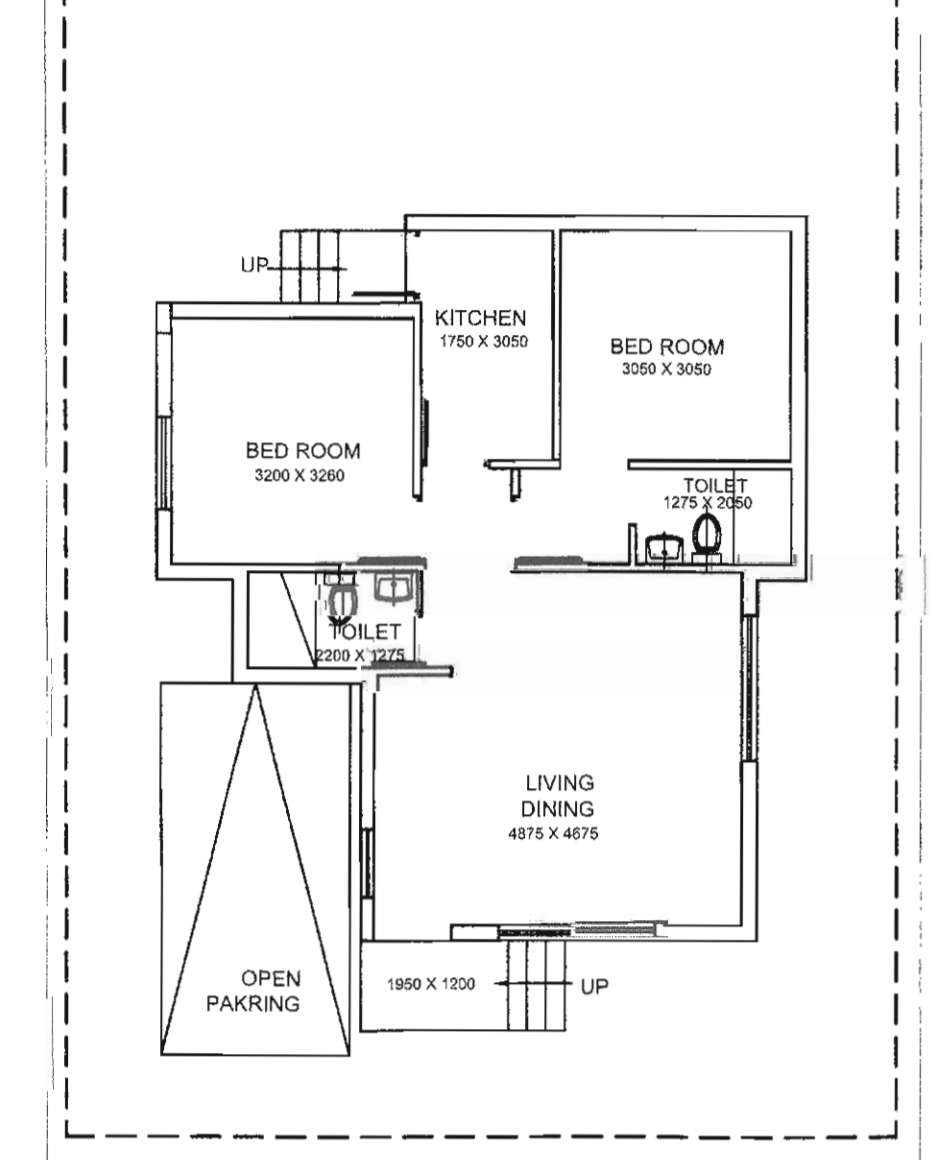
GROUND FLOOR PLAN
BUA = 65.07 SQMT = 700.41 SQFT

BUNGLOW NO.-85



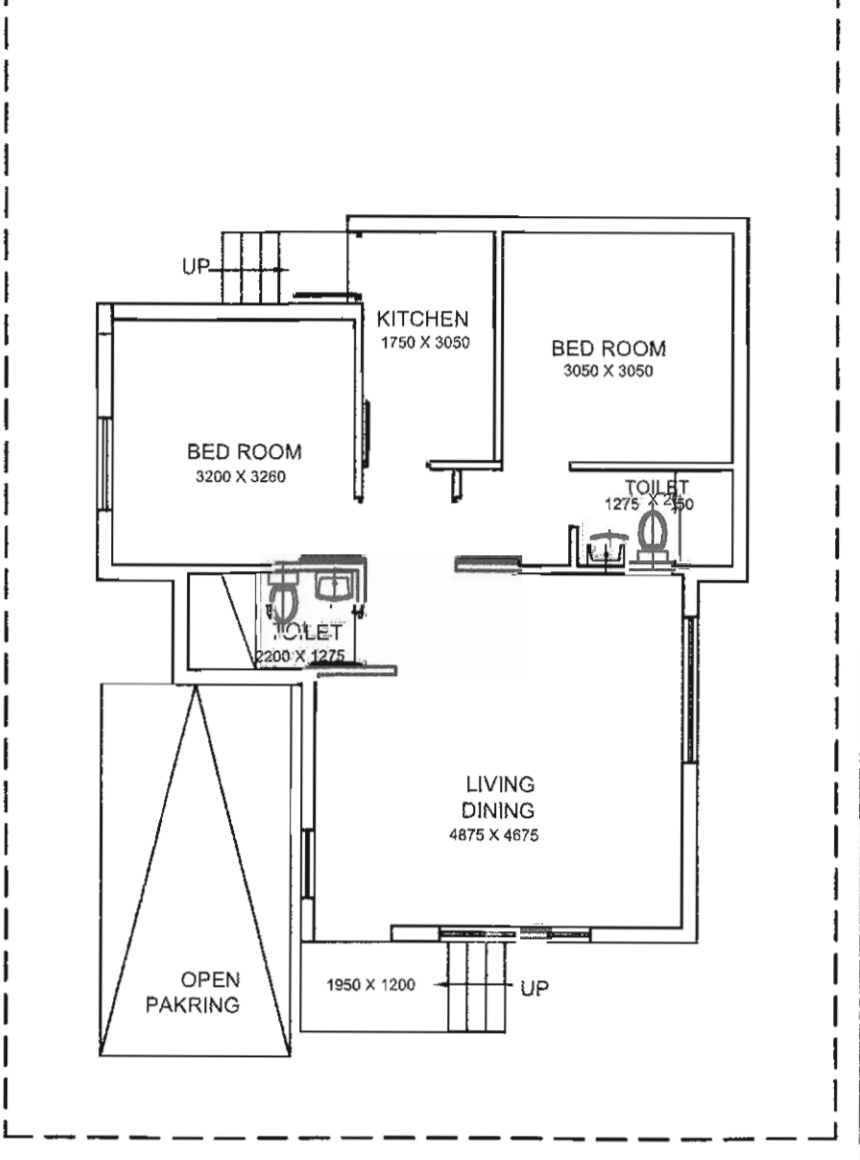
GROUND FLOOR PLAN
BUA = 65.07 SQMT = 700.41 SQFT

BUNGLOW NO.-86



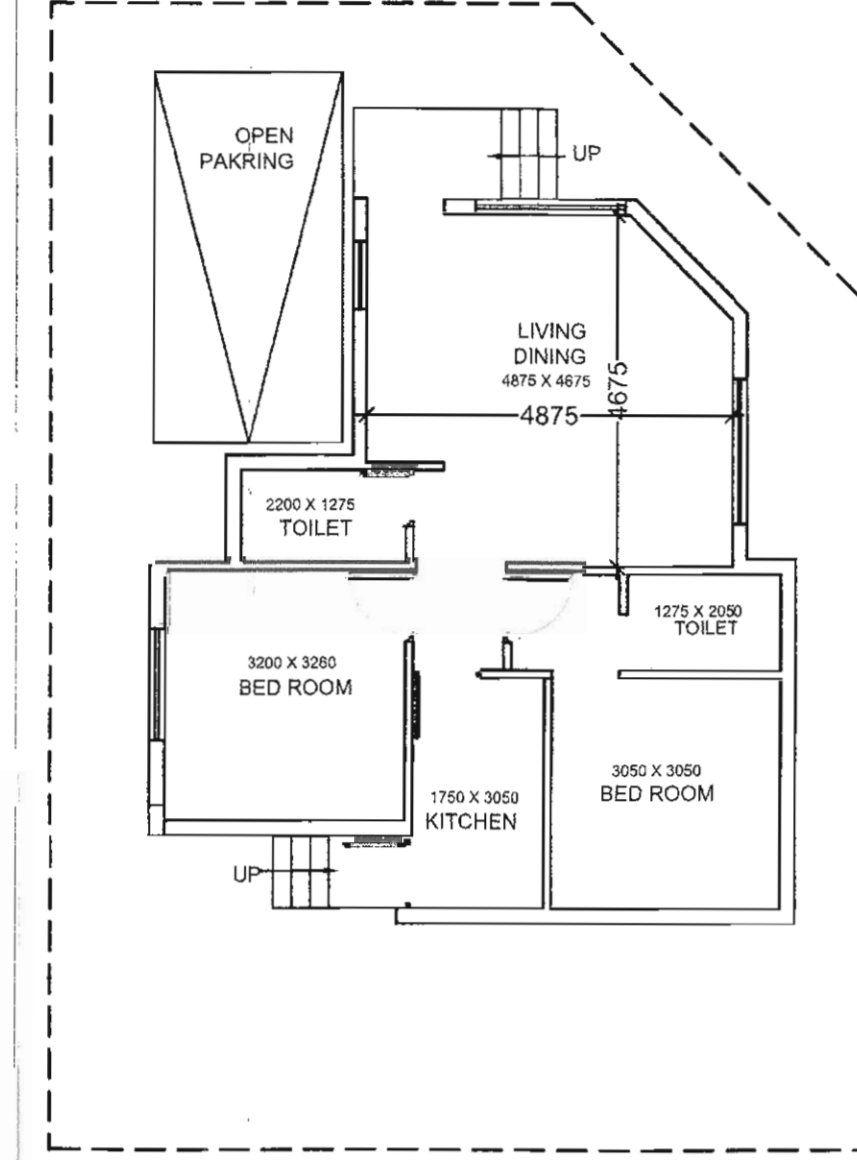
GROUND FLOOR PLAN
BUA = 65.07 SQMT = 700.41 SQFT

BUNGLOW NO.-87



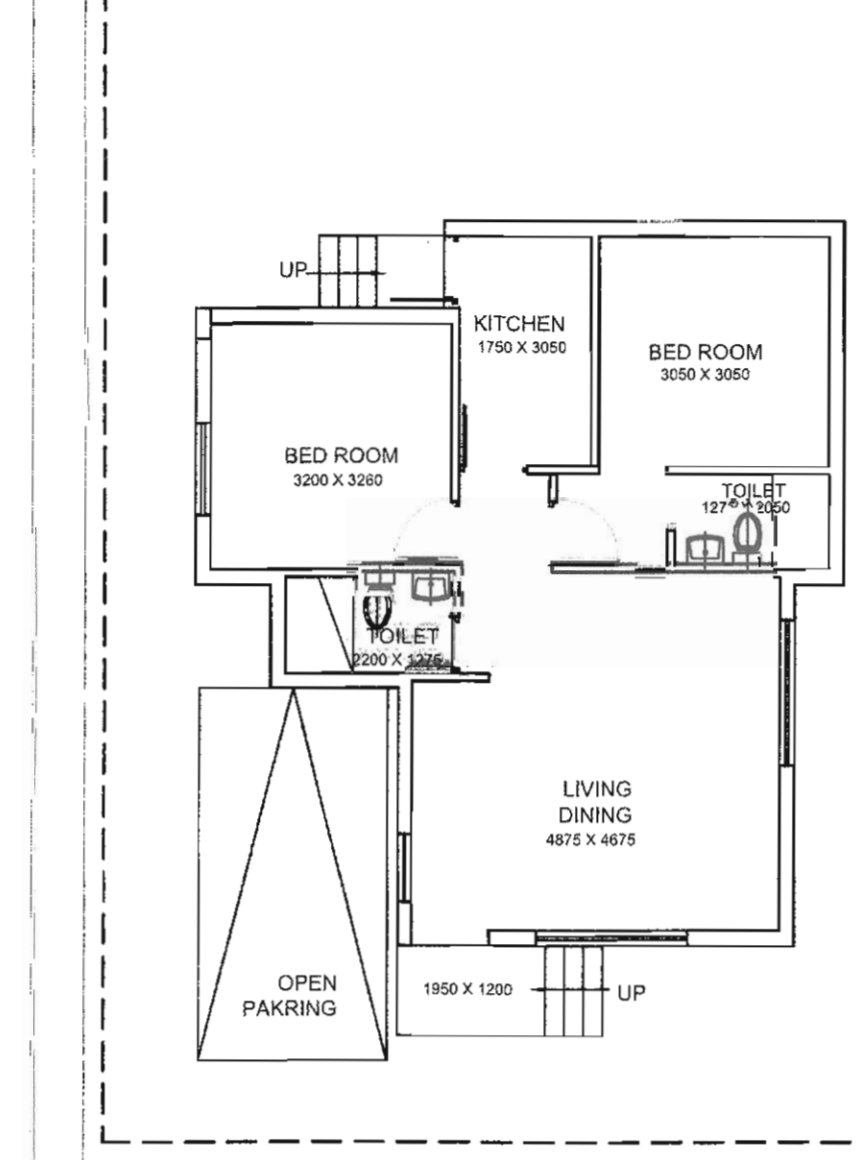
GROUND FLOOR PLAN
BUA = 65.07 SQMT = 700.41 SQFT

BUNGLOW NO.-88



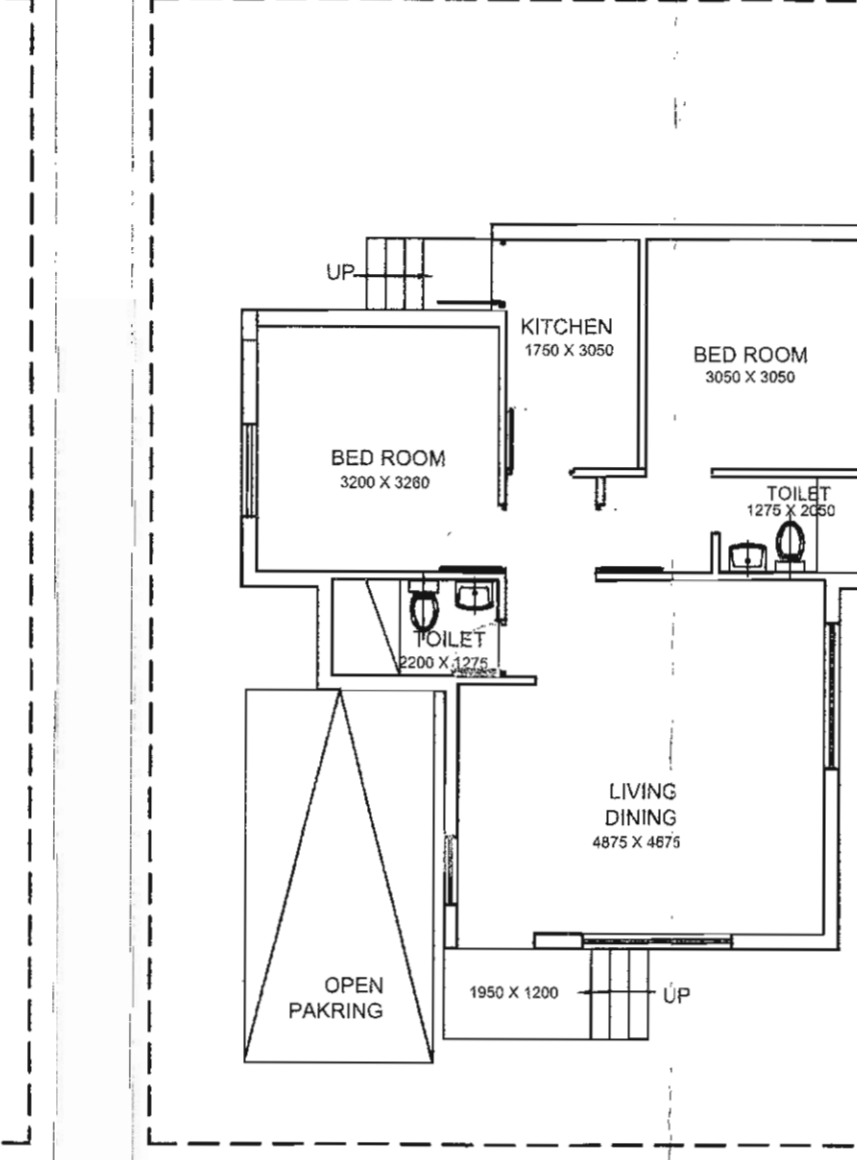
GROUND FLOOR PLAN
BUA = 63.94 SQMT = 688.25 SQFT

BUNGLOW NO.-89



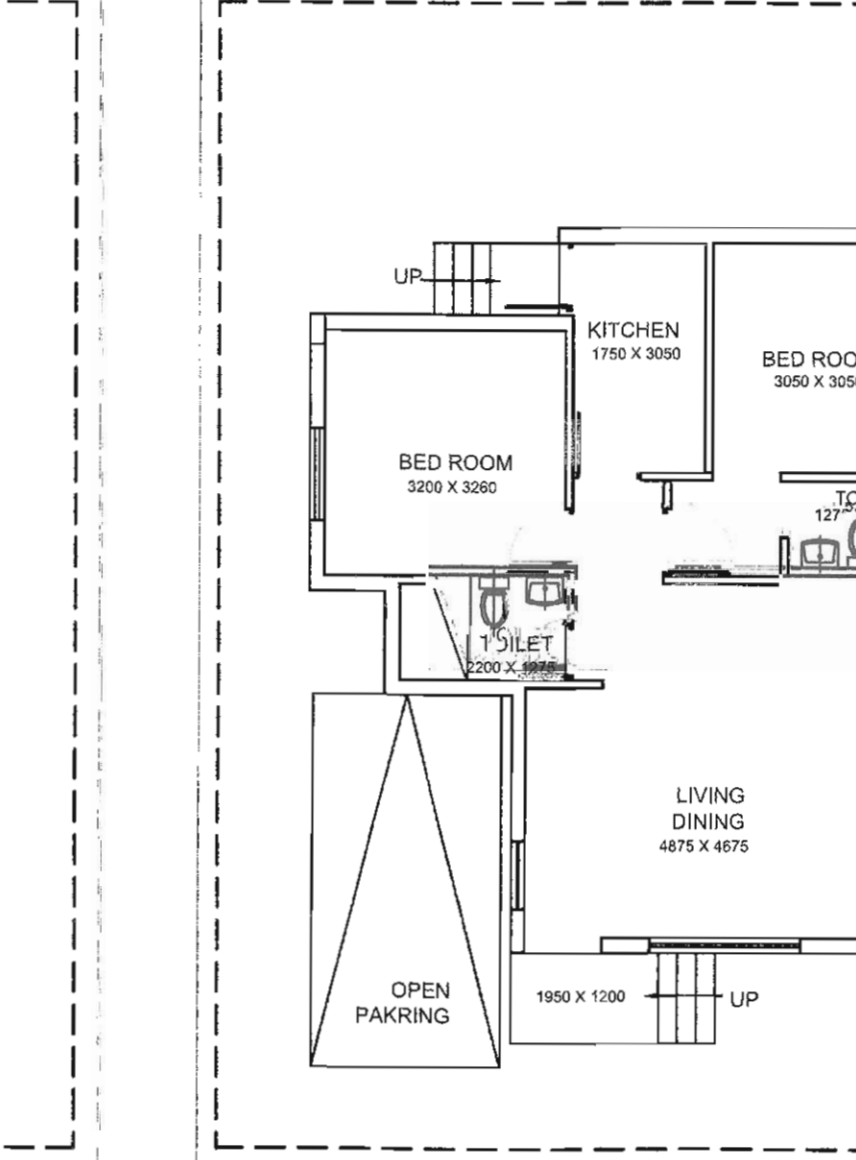
GROUND FLOOR PLAN
BUA = 65.07 SQMT = 700.41 SQFT

BUNGLOW NO.-90



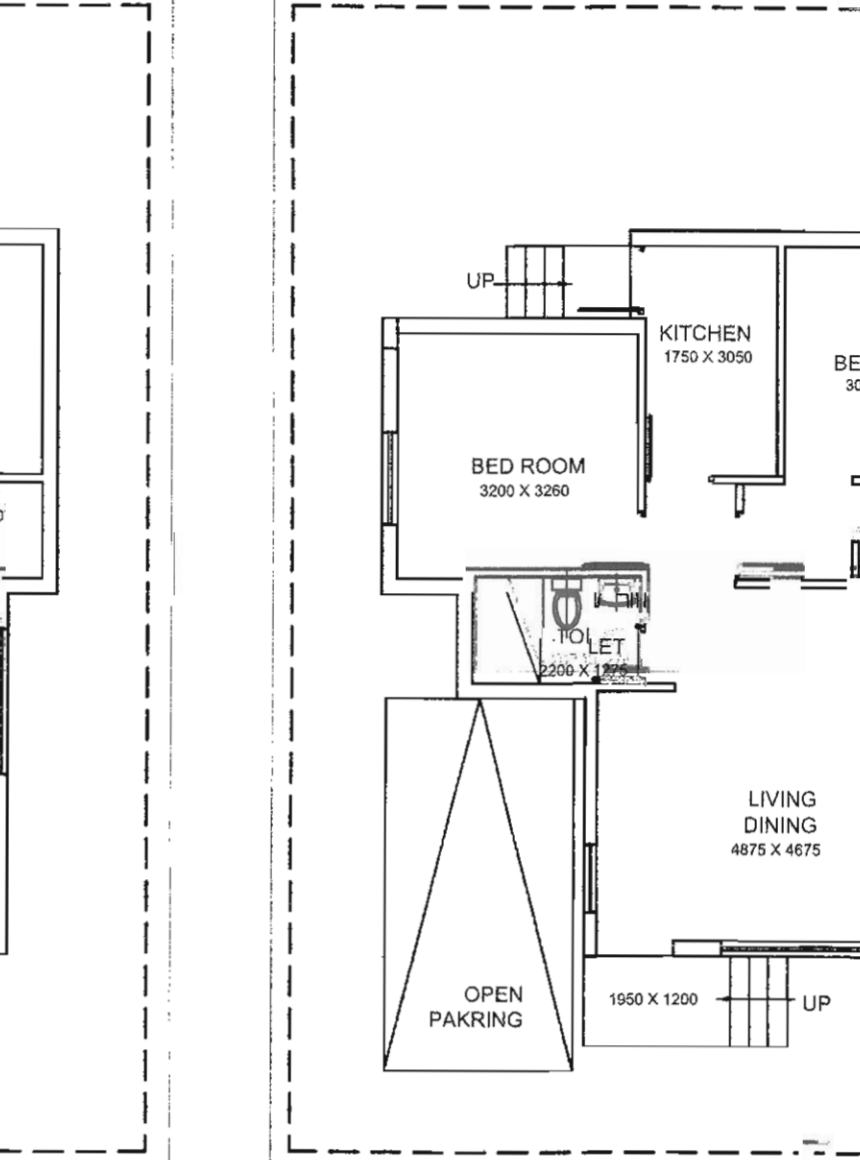
GROUND FLOOR PLAN
BUA = 65.07 SQMT = 700.41 SQFT

BUNGLOW NO.-91



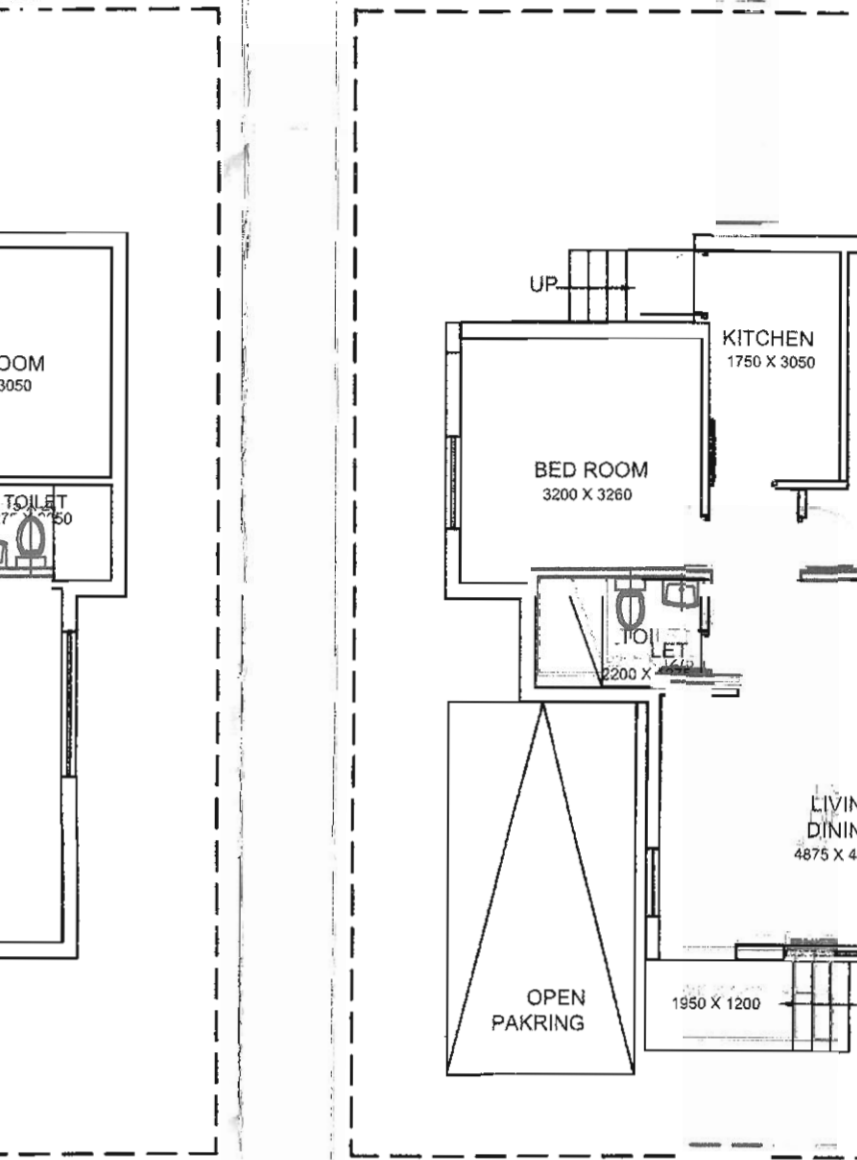
GROUND FLOOR PLAN
BUA = 65.07 SQMT = 700.41 SQFT

BUNGLOW NO.-92



GROUND FLOOR PLAN
BUA = 65.07 SQMT = 700.41 SQFT

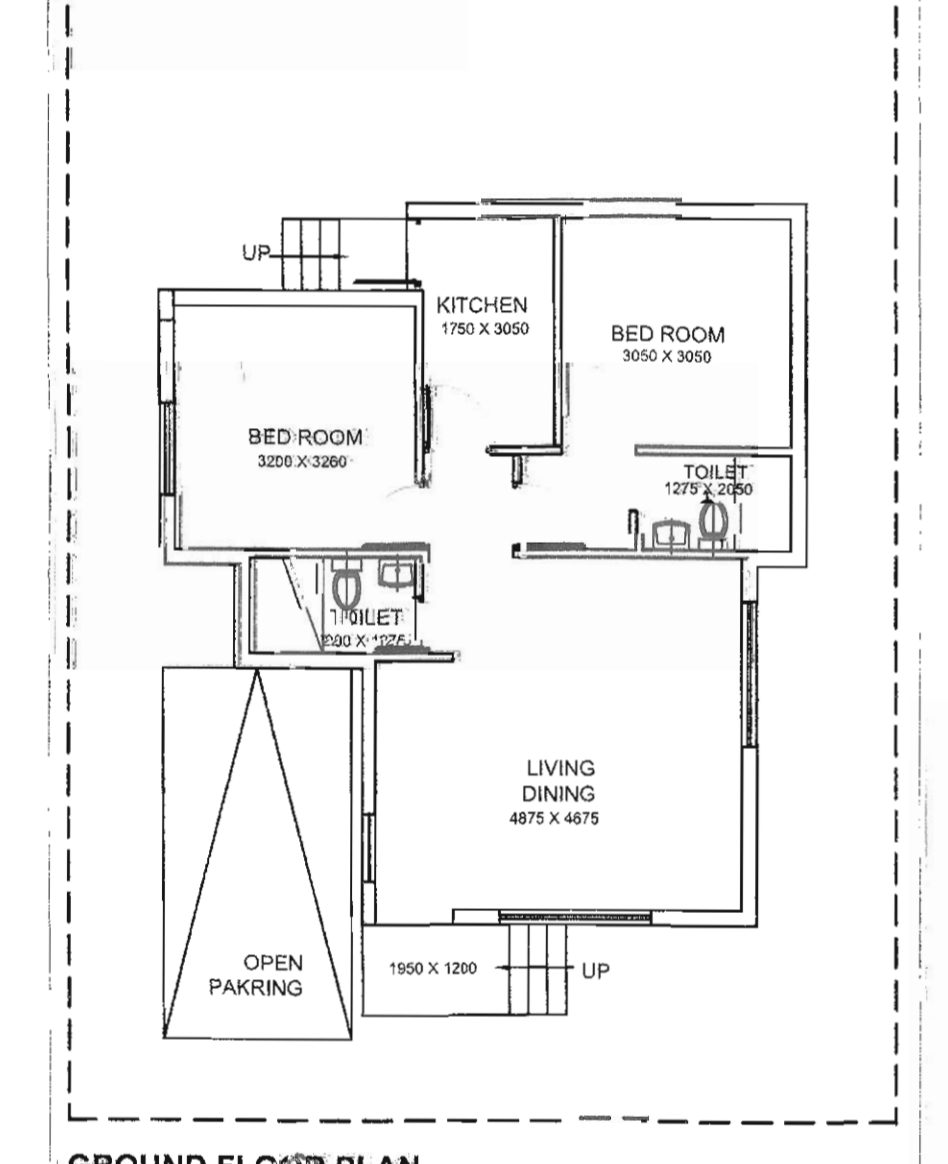
BUNGLOW NO.-93



GROUND FLOOR PLAN
BUA = 65.07 SQMT = 700.41 SQFT

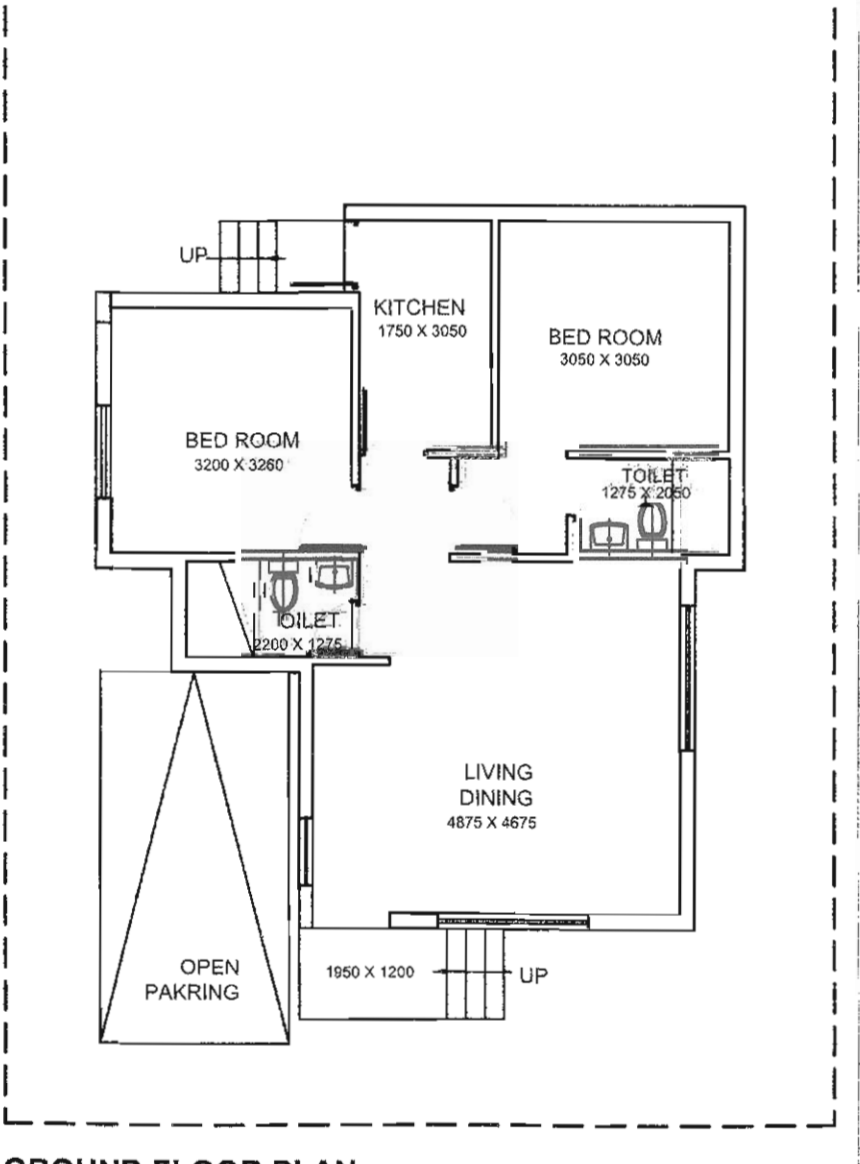
BUNGLOW NOS.	LAND AREA (KATHA)	BUA (SQMT)
78	2.50	65.22
79	2.53	65.07
80	2.50	65.07
81	2.50	65.07
82	2.50	65.07
83	2.50	65.07
84	2.50	65.07
85	2.50	65.07
86	2.50	65.07
87	2.50	65.07
88	2.39	63.94
89	2.50	65.07
90	2.50	65.07
91	2.50	65.07
92	2.50	65.07
93	2.50	65.07
94	2.50	65.07
95	2.50	65.07
96	2.02	53.67
97	2.95	65.07
98	2.82	65.07
99	2.79	65.07
100	2.69	65.07
101	2.38	65.07
102	2.54	65.07
103	2.53	65.07
104	4.28	65.45
105	3.86	97.76
106	3.57	117.30

BUNGLOW NO.-94



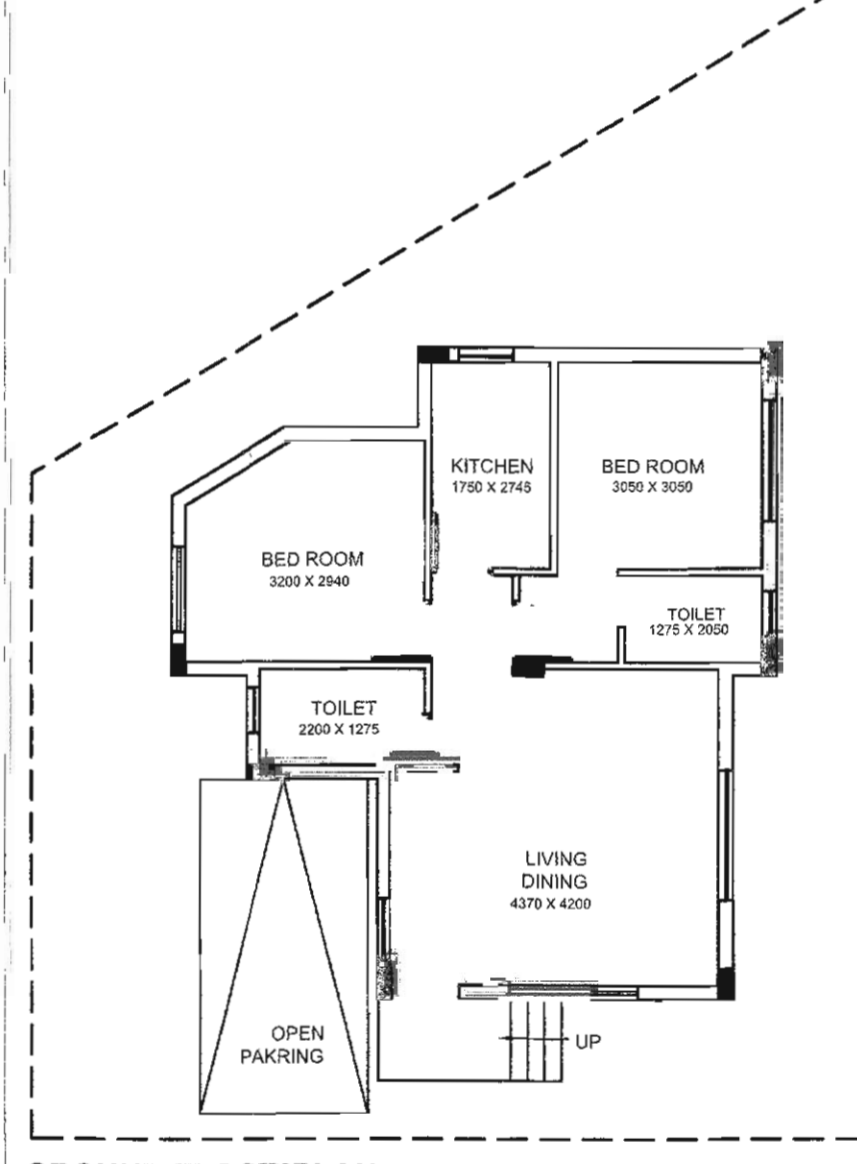
GROUND FLOOR PLAN
BUA = 65.07 SQMT = 700.41 SQFT

BUNGLOW NO.-95



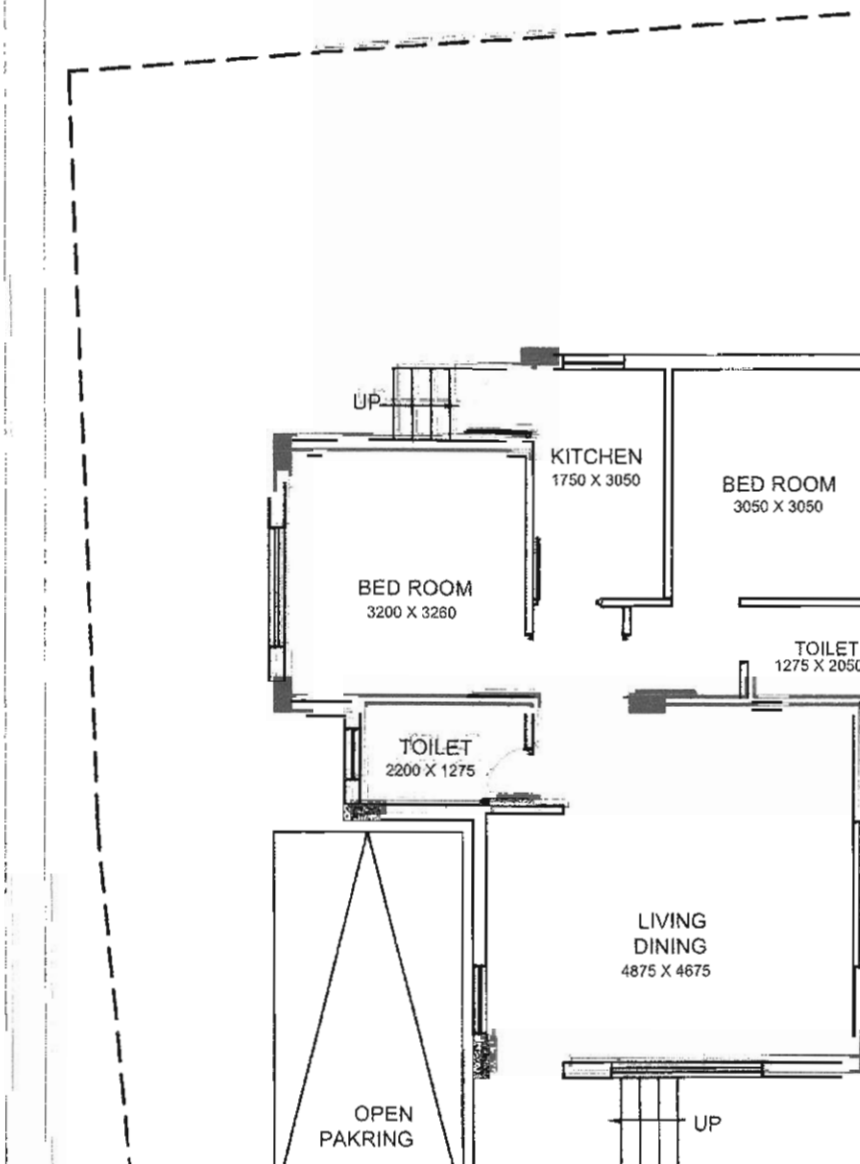
GROUND FLOOR PLAN
BUA = 68.07 SQMT = 700.41 SQFT

BUNGLOW NO.-96



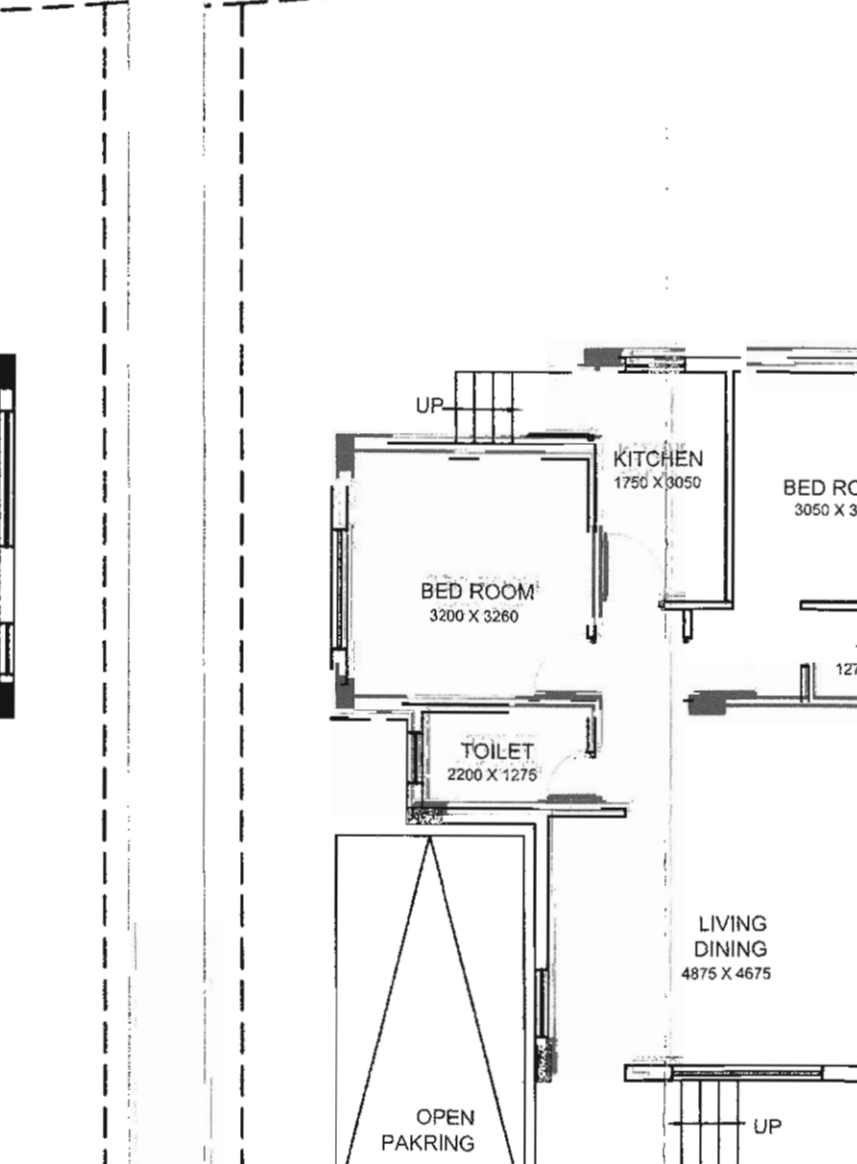
GROUND FLOOR PLAN
BUA = 53.67 SQMT = 577.70 SQFT

BUNGLOW NO.-97



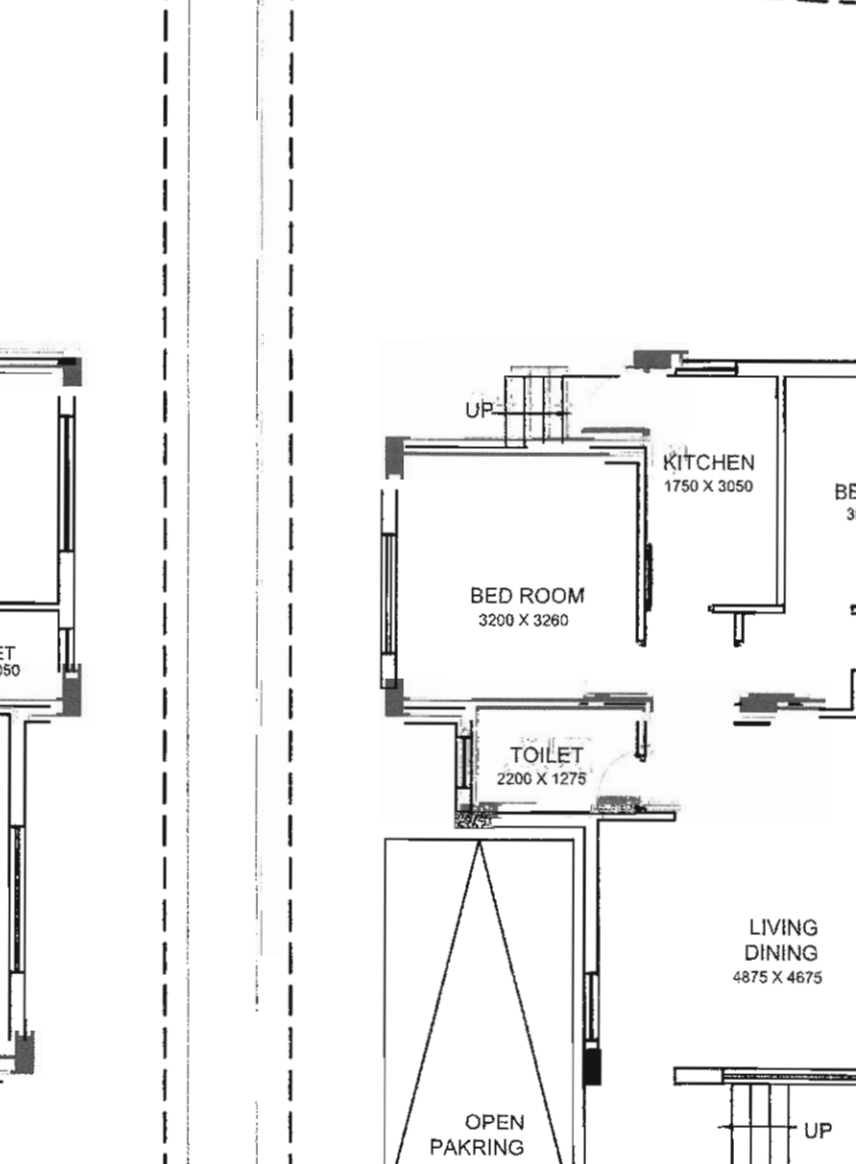
GROUND FLOOR PLAN
BUA = 65.07 SQMT = 700.41 SQFT

BUNGLOW NO.-98



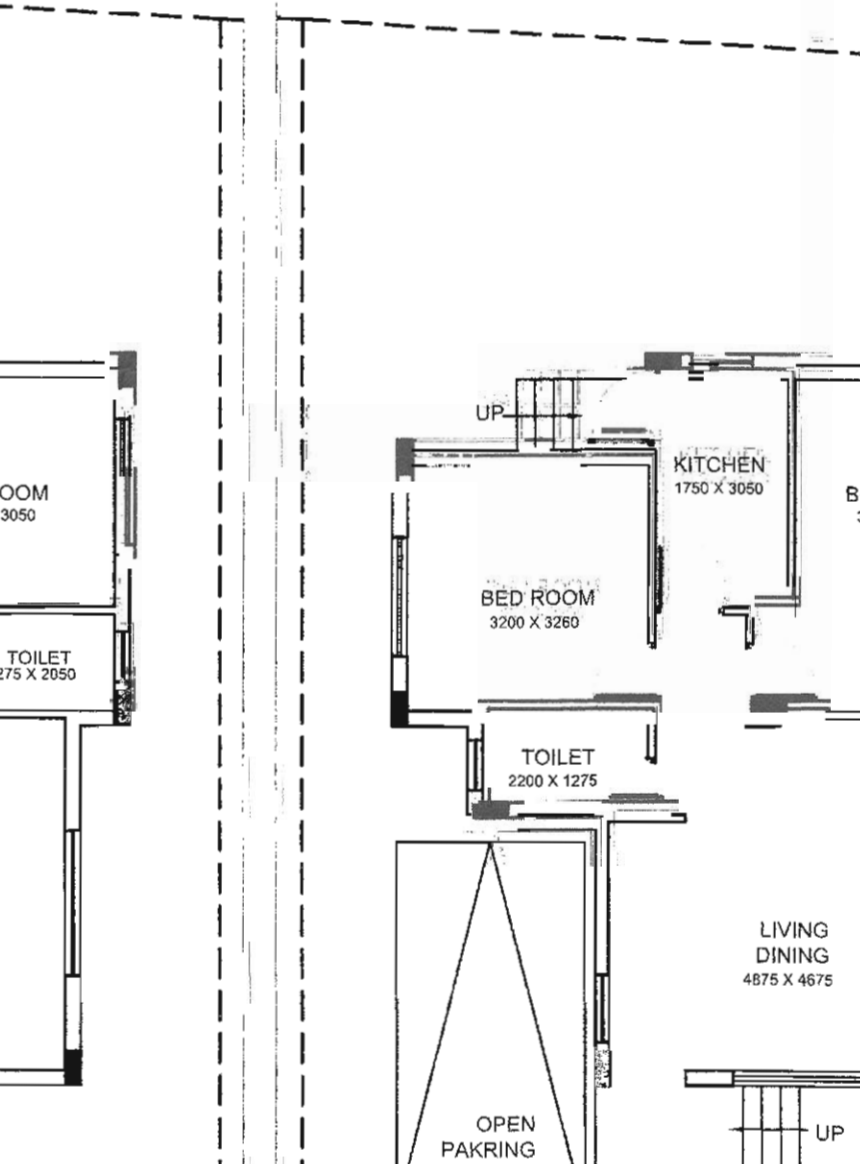
GROUND FLOOR PLAN
BUA = 65.07 SQMT = 700.41 SQFT

BUNGLOW NO.-99



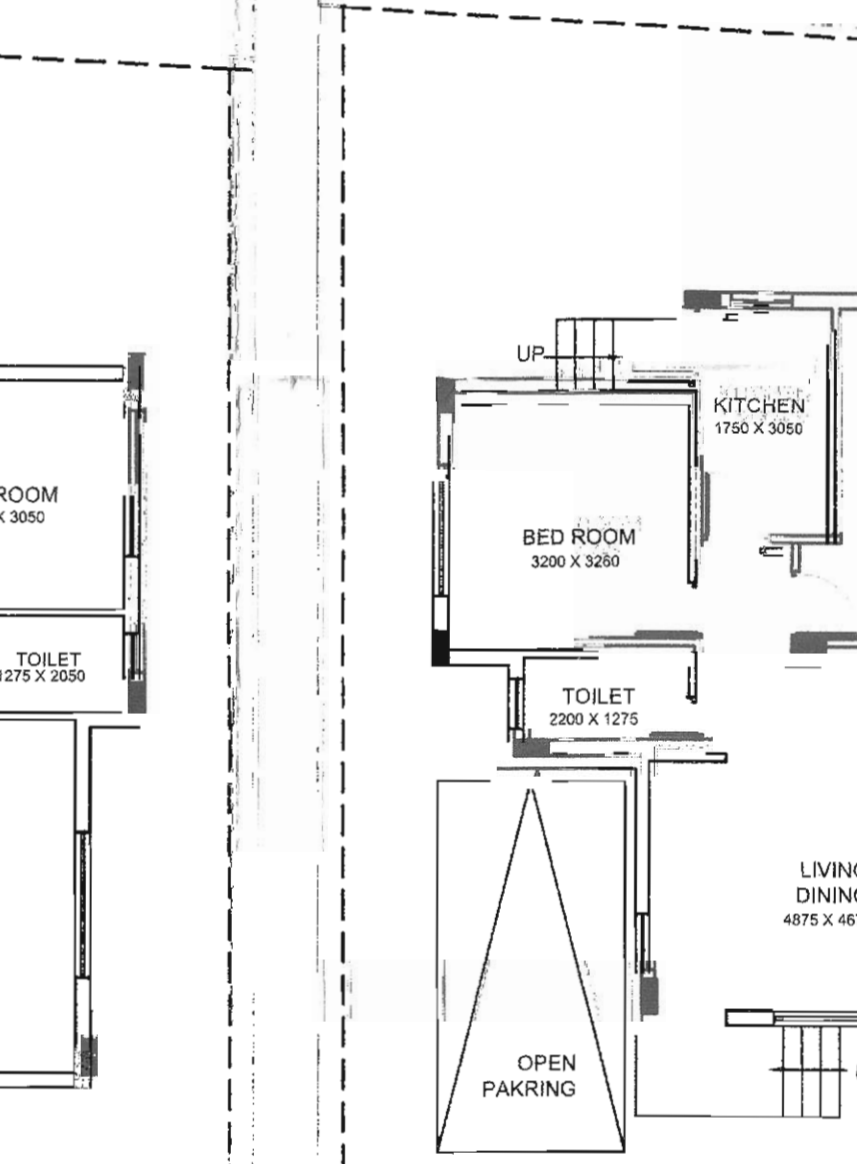
GROUND FLOOR PLAN
BUA = 65.07 SQMT = 700.41 SQFT

BUNGLOW NO.-100



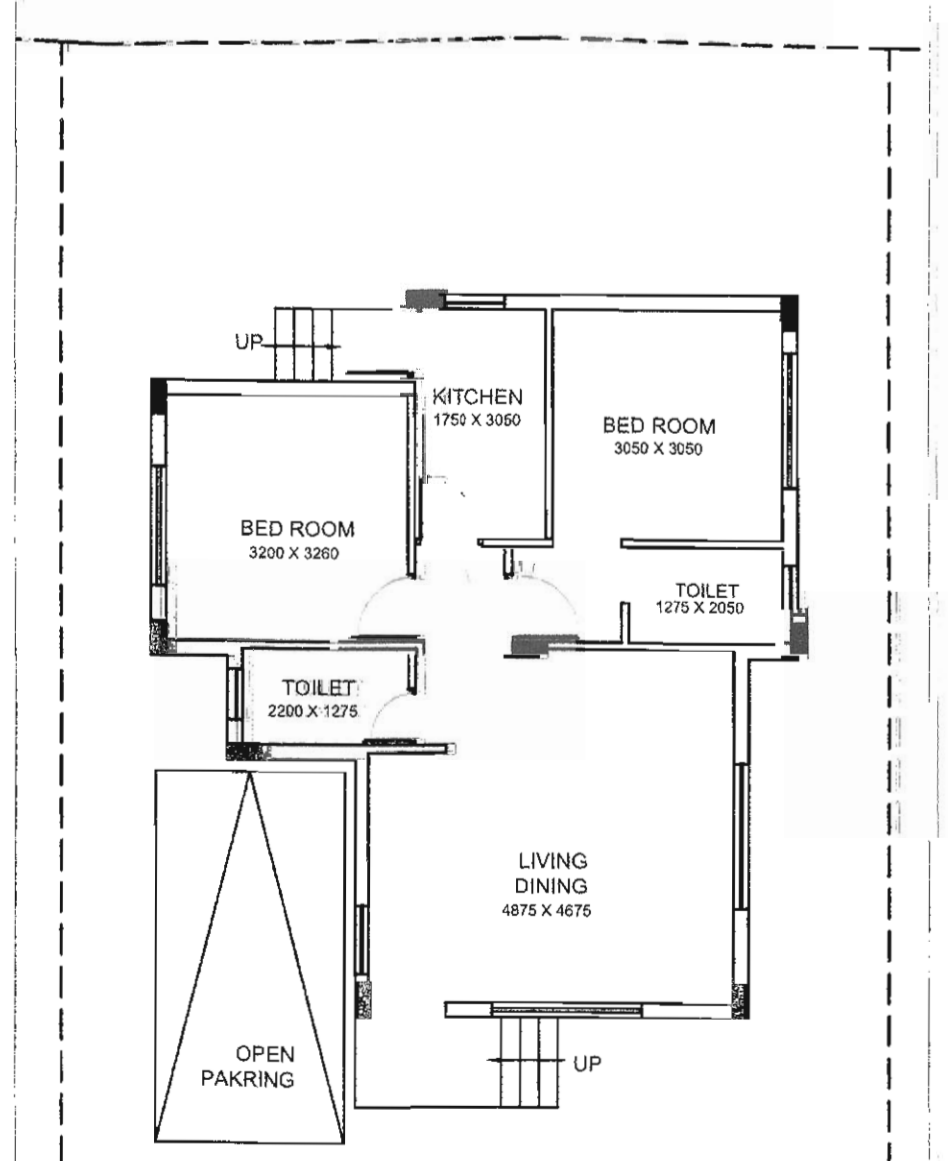
GROUND FLOOR PLAN
BUA = 65.07 SQMT = 700.41 SQFT

BUNGLOW NO.-101



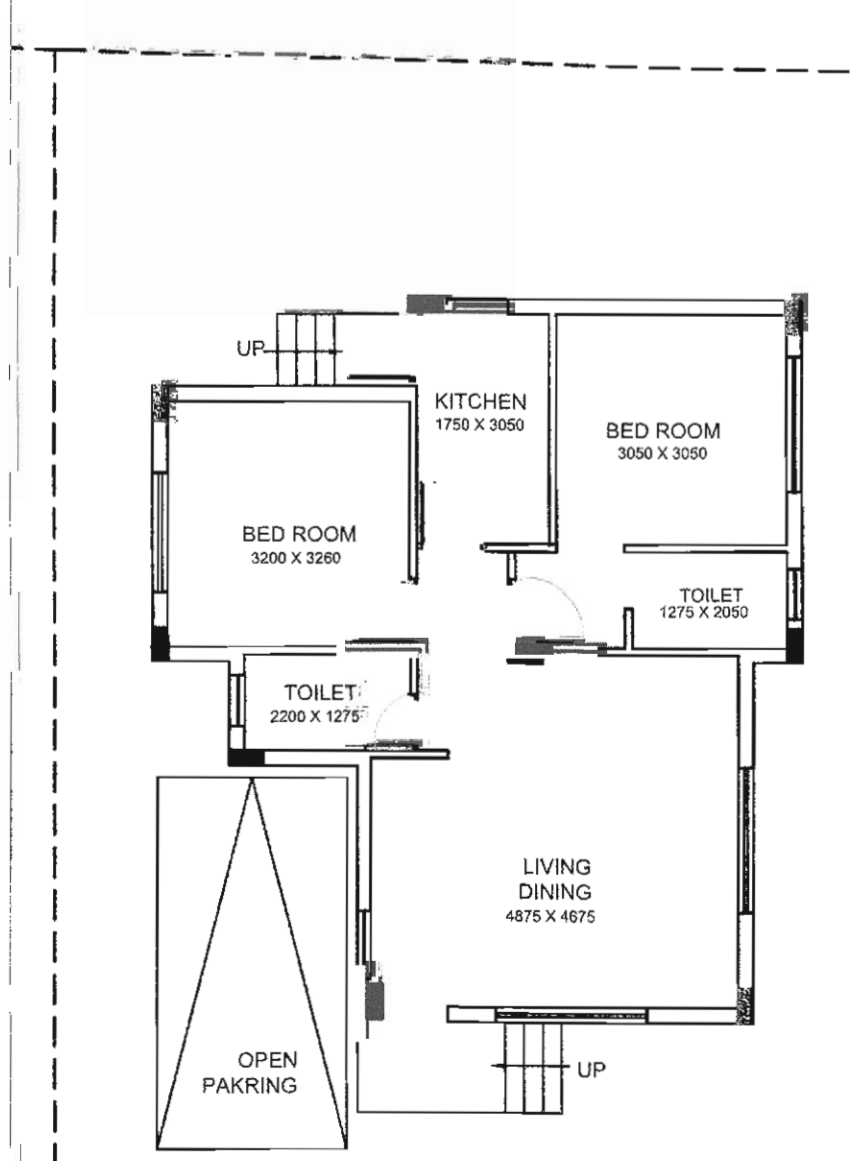
GROUND FLOOR PLAN
BUA = 65.07 SQMT = 700.41 SQFT

BUNGLOW NO.-102



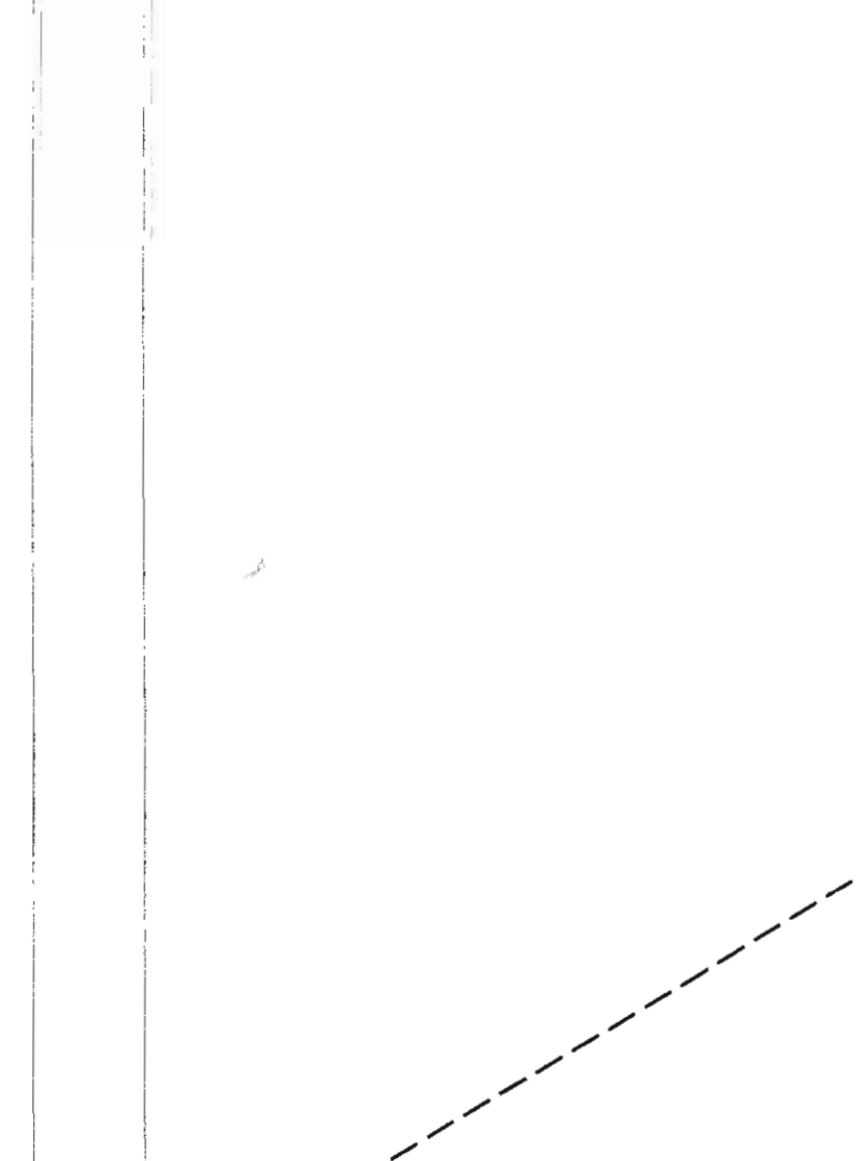
GROUND FLOOR PLAN
BUA = 65.07 SQMT = 700.41 SQFT

BUNGLOW NO.-103



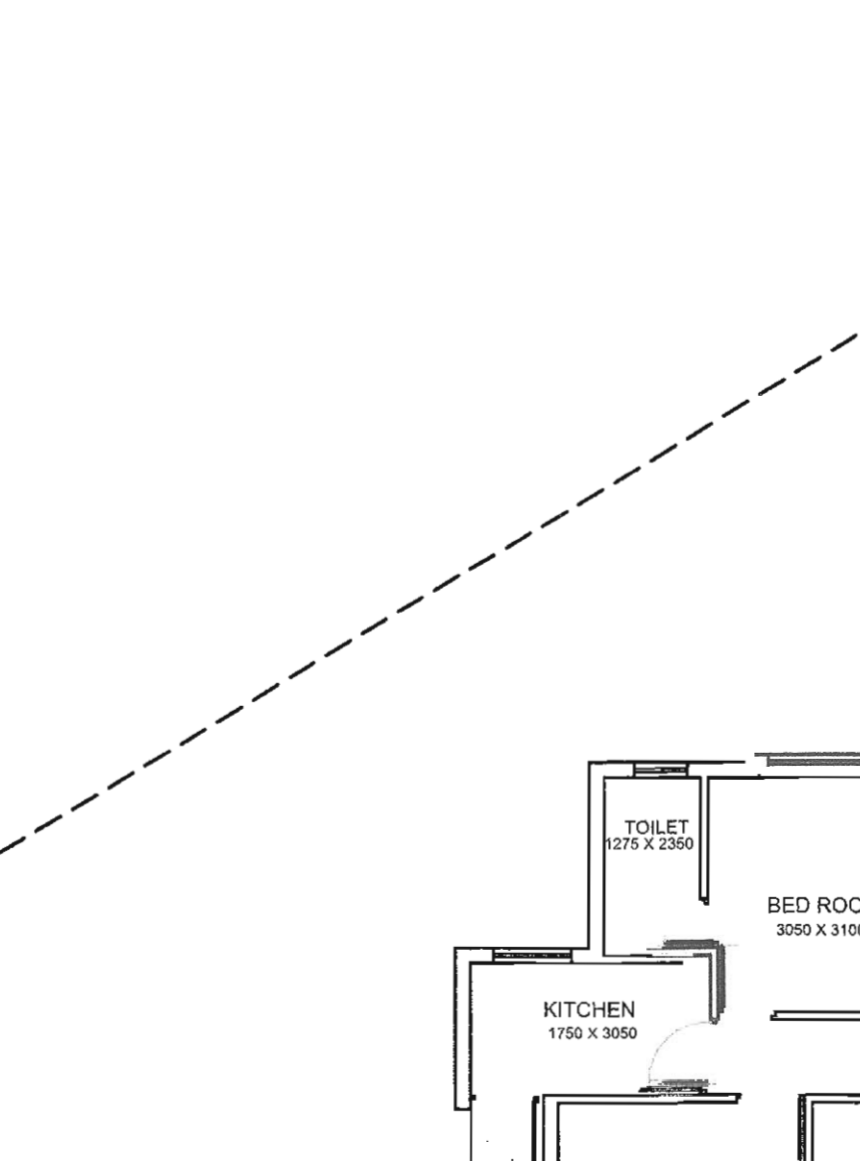
GROUND FLOOR PLAN
BUA = 65.07 SQMT = 700.41 SQFT

BUNGLOW NO.104



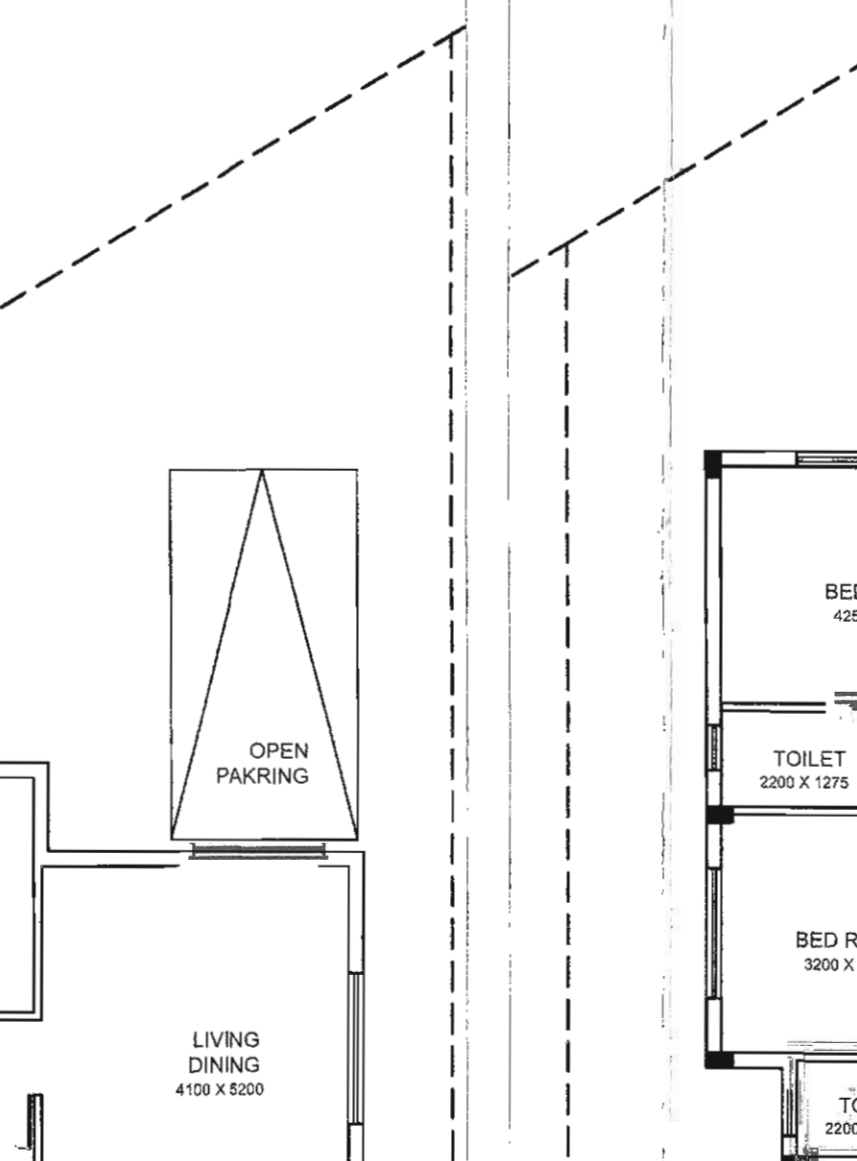
GROUND FLOOR PLAN
BUA = 65.45 SQMT = 704.50 SQFT

BUNGLOW NO.-105



GROUND FLOOR PLAN
BUA = 97.76 SQMT = 1052.29 SQFT

BUNGLOW NO.-106



GROUND FLOOR PLAN
BUA = 66.98 SQMT = 720.97 SQFT

STAMP OF APPROVAL OF PLAN

Bengal Shristi Infrastructure Development Ltd.

Signature of Owner

Signature of Architect

REVISION IN SITE PLAN & SANCTION OF 123 NOS. OF SINGLE STORED BUNGLOWS (UPAVAN)

CLIENT: BENGAL SHRISTI INFRASTRUCTURE DEVELOPMENT LIMITED.

ARCHITECT: OS₂ ARCHITECTS

DATE: 15.12.2021

SCALE: 1:100

SHEET: 1 OF 1

PROJECT: REVISION IN SITE PLAN & SANCTION OF 123 NOS. OF SINGLE STORED BUNGLOWS (UPAVAN)

NO. 10 AND PLOT NO. - 3, 4, 5, 7, 7/5/19, 7/5/20, 7/5/21, 7/5/22, 7/5/23, 7/5/24, 4/5/25, 7/5/26, 7/5/27 (R/P), 8/1, 9/1, 10/1, 11/1, 12/1, 13/1, 14/1, 15/1, 16/1, 17/1, 18/1, 19/1, 20/1, 21/1, 22/1, 23/1, 24/1, 25/1, 26/1, 27/1, 28/1, 29/1, 30/1, 31/1, 32/1, 33/1, 34/1, 35/1, 36/1, 37/1, 38/1, 39/1, 40/1, 41/1, 42/1, 43/1, 44/1, 45/1, 46/1, 47/1, 48/1, 49/1, 50/1, 51/1, 52/1, 53/1, 54/1, 55/1, 56/1, 57/1, 58/1, 59/1, 60/1, 61/1, 62/1, 63/1, 64/1, 65/1, 66/1, 67/1, 68/1, 69/1, 70/1, 71/1, 72/1, 73/1, 74/1, 75/1, 76/1, 77/1, 78/1, 79/1, 80/1, 81/1, 82/1, 83/1, 84/1, 85/1, 86/1, 87/1, 88/1, 89/1, 90/1, 91/1, 92/1, 93/1, 94/1, 95/1, 96/1, 97/1, 98/1, 99/1, 100/1

OS₂ ARCHITECTS

15.12.2021

1:100

1 OF 1

REVISION IN SITE PLAN & SANCTION OF 123 NOS. OF SINGLE STORED BUNGLOWS (UPAVAN)

NO. 10 AND PLOT NO. - 3, 4, 5, 7, 7/5/19, 7/5/20, 7/5/21, 7/5/22, 7/5/23, 7/5/24, 4/5/25, 7/5/26, 7/5/27 (R/P), 8/1, 9/1, 10/1, 11/1, 12/1, 13/1, 14/1, 15/1, 16/1, 17/1, 18/1, 19/1, 20/1, 21/1, 22/1, 23/1, 24/1, 25/1, 26/1, 27/1, 28/1, 29/1, 30/1, 31/1, 32/1, 33/1, 34/1, 35/1, 36/1, 37/1, 38/1, 39/1, 40/1, 41/1, 42/1, 43/1, 44/1, 45/1, 46/1, 47/1, 48/1, 49/1, 50/1, 51/1, 52/1, 53/1, 54/1, 55/1, 56/1, 57/1, 58/1, 59/1, 60/1, 61/1, 62/1, 63/1, 64/1, 65/1, 66/1, 67/1, 68/1, 69/1, 70/1, 71/1, 72/1, 73/1, 74/1, 75/1, 76/1, 77/1, 78/1, 79/1, 80/1, 81/1, 82/1, 83/1, 84/1, 85/1, 86/1, 87/1, 88/1, 89/1, 90/1, 91/1, 92/1, 93/1, 94/1, 95/1, 96/1, 97/1, 98/1, 99/1, 100/1

OS₂ ARCHITECTS